



**APEX DYNAMICS, USA**

*First In Helical Technology...*

1363-10 Lincoln Avenue  
Holbrook, NY 11741  
Tel: (631) 244-9040 Fax: (631) 244-9030

E-Mail: [philshaw@apexdynamicsusa.com](mailto:philshaw@apexdynamicsusa.com)  
Internet: [www.apexdynamicsusa.com](http://www.apexdynamicsusa.com)

---

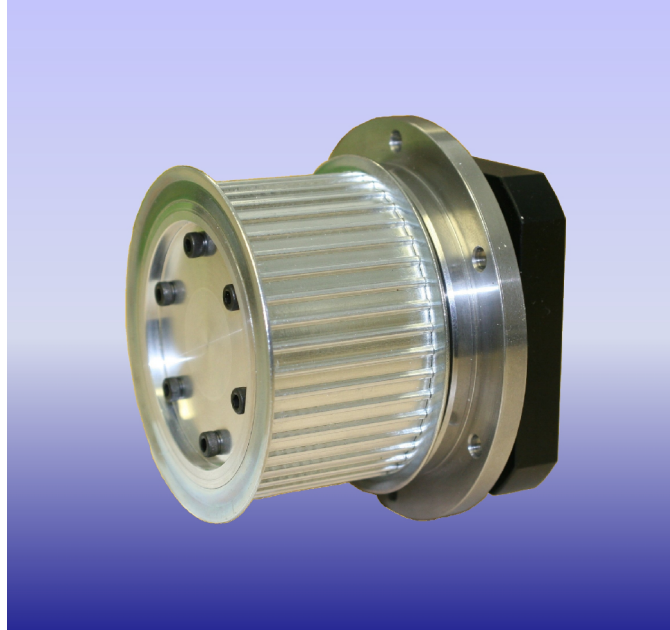
## NEWS RELEASE

---

For Immediate Release

Contact: Phil Shaw

### **Apex Dynamics USA Releases the NEW Ultra Compact Integrated Geared Pulley Drive**



Apex Dynamics releases the new Ultra Compact Integrated Geared Pulley Drive **AL series**. The AL eliminates the need for a right angle gearbox, couplings and or additional bearings, in turn, reducing cost, increasing performance, and reducing parts and engineering time from the system.

The AL series utilizes a fixed planet design, which allows the output housing of the gearbox to drive the pulley versus a standard shaft driven system. This new technology and design allows the pulley to be centered in between two high capacity bearings which increases stiffness and radial load capacities to over 2 times competitive models.

The True Helical gear design increases tooth-to-tooth contact ratio by over 33% vs. the standard spur gearing geometry. The Helix angle is optimized and produces smooth and quiet operation at extreme speeds. ([Less than 2 arc-min, less than 56dB, up to 10,000rpms input](#)).

The product is offered in 7 sizes (70mm thru 280mm) and is equipped with standard single & double stage ratios (2,3,4,5,6,7,8,9,10,15,20,25,30,35,40,45,50,60,70,80,90). Covered by the industry leading 5-year tip to toe warranty and delivery is guaranteed with in two weeks or it's FREE.

[The Most Productive Helical Planetary Gearhead Manufacturer in the World!](#)

[Please contact Phil Shaw](#)

[At Apex Dynamics USA for more information](#)  
[\(631\) 244-9040 - \(631\) 244-9030 Fax](#)