



**APEX DYNAMICS, USA**

*First In Helical Technology...*

1363-10 Lincoln Avenue  
Holbrook, NY 11741  
Tel: (631) 244-9040 Fax: (631) 244-9030

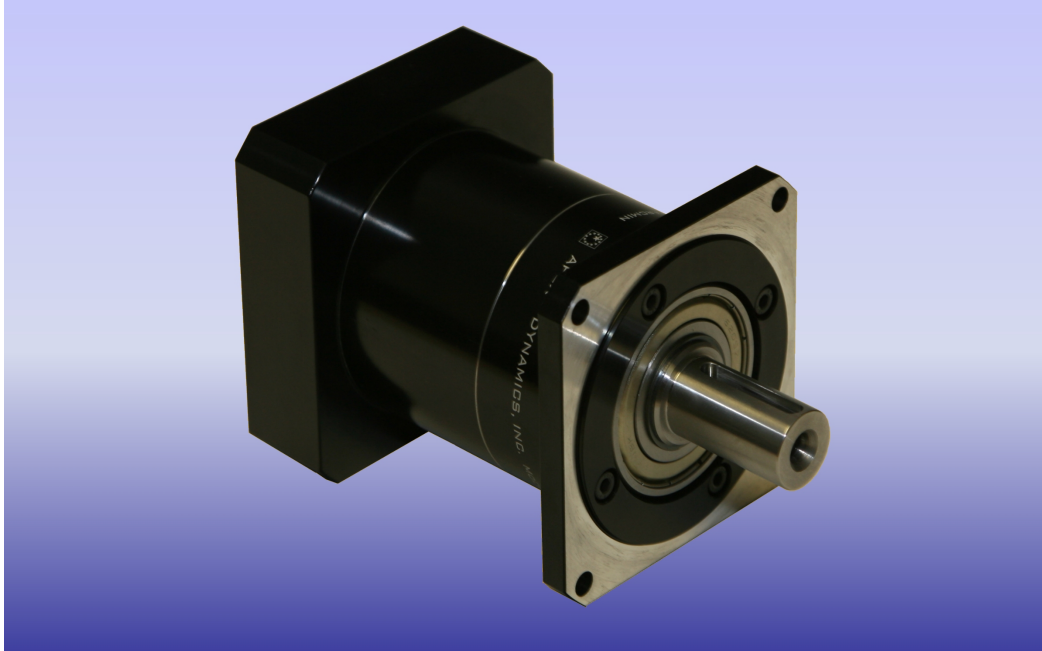
E-Mail: [philshaw@apexdynamicsusa.com](mailto:philshaw@apexdynamicsusa.com)  
Internet: [www.apexdynamicsusa.com](http://www.apexdynamicsusa.com)

## NEWS RELEASE

For Immediate Release

Contact: Phil Shaw

### Apex Dynamics USA Releases the NEW Low Cost Precision NEMA PN Series



Apex Dynamics releases the new Precision Planetary NEMA PN series, which utilizes our one-piece shaft carrier design (Patent # 6503168). The PN series is a direct replacement for NEMA style gearheads in the market today. Supported with our oversized ball bearing straddle mount for increased radial and axial loading capacity. Coated Steel output housing along with 100% guaranteed delivery creates a perfect low cost servo grade gearbox for every application. Other P series options are Square Metric (PB) and cylindrical (PE & PG) which are all available from STOCK.

Fully supported planet gearing along with the overall thickness of the New PN planet gears increase the tooth-to-tooth contact ratio creating torque capacities of over 30% vs. other standard spur gearing geometry (Competitive Models). The gearing is optimized and produces smooth and quiet operation at extreme speeds. (Less than 6 arc-min, less than 68dB, up to 8,000rpms input).

The product is offered in 5 sizes (Nema 23,34,42,56,& 75) and is equipped with single stage ratios of 3,4,5,7, & 10:1 along with 9 more binary (double stage) ratios (15,16,20,25,35,40,50,70,100)

Covered by the industry leading 2-year tip to toe warranty and delivery is guaranteed within two weeks or it's FREE. Visit our website today for more information ([www.apexdynamicsusa.com](http://www.apexdynamicsusa.com)) .

**The Most Productive Helical Planetary Gearhead Manufacturer in the World!**

Please contact Phil Shaw

At Apex Dynamics USA for more information

(631) 244-9040 - (631) 244-9030 Fax